

Model	Vehicle Price	Instalment (Incl. VAT. Incl. Monthly Service Fee)	Term (months)	Deposit	Interest	Rate linked to Prime (11,50%)	Balloon	Total cost of credit
FIT 5-door 1.5 Comfort CVT	R 380 500	R 4 399	72	10%	7,57%	-3,68%	40%	R 464 535
FIT 5-door 1.5 Elegance CVT	R 416 500	R 4 899	72	10%	7,96%	-3,29%	40%	R 514 437
FIT 5-door 1.5 HYBRID eCVT	R 544 900	R 5 799	72	10%	6,10%	-5,15%	40%	R 629 684
FIT 5-door 1.5 Comfort CVT	R 380 500	R 5 099	72	0%	7,71%	-3,54%	40%	R 514 222
FIT 5-door 1.5 Elegance CVT	R 416 500	R 5 699	72	0%	8,20%	-3,05%	40%	R 571 222
FIT 5-door 1.5 HYBRID eCVT	R 544 900	R 6 899	72	0%	6,64%	-4,61%	40%	R 707 783

Finance offer valid from 1st January 2025 until 31st March 2025 on all models listed on the site and at all participating Honda dealers, unless otherwise stated.

Consult your local dealer for further details and tailor-made offers.

Initiation Fee R1207,50 incl VAT | Interest Rate Linked to Prime | Payment includes monthly service fee of R69

Terms and conditions apply.

Finance is subject to credit approval and risk profile dependent. Applicable Honda Finance Initiation fee and service fee are included in the principal debt. Variable

Rate is linked to the prime rate and subject to adjustments. All information with the proviso that mistakes, printing and typing errors may occur.

Honda Finance, a product of WesBank – a Division of First Rand Bank Ltd. Registered Bank. An Authorised Financial Services and Registered Credit Provider.

NCRCP20.

**HONDA**  
The Power of Dreams

*FIND YOUR*

**FIT**



Available in Hybrid

**e:HEV**



# CONTENTS

---

- 04 Design Blueprint
- 06 Technology & Connectivity
- 08 Honda Magic Seats®
- 09 Hybrid Performance
- 10 Advanced Safety
- 12 Model Showcase
- 14 Colours
- 16 Specifications



*PERFORMANCE-INSPIRED  
DRIVING MEETS*

## ERGONOMIC DESIGN

---

The New Honda FIT is here to deliver an advanced driving experience with sleek, sophisticated finishes and generous interior space, now also available with Honda's new e:HEV Hybrid Technology.

**This performance-inspired companion takes metropolitan manoeuvrability to new heights with the following specifications:**



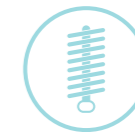
Advanced hybrid powertrain delivering optimum efficiency and performance.



Evolved, contemporary design of the iconic Honda Jazz silhouette.



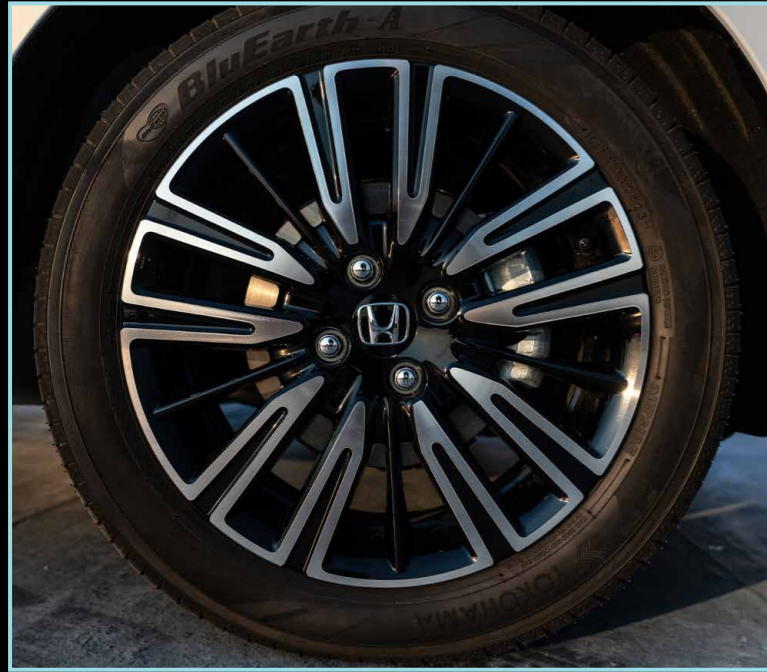
Class-leading interior space and outstanding practicality.



Suspension enhancements delivering a dynamic driving experience.

**Finding your FIT has never been this easy.**





## *OUTSTANDING* **DETAILED DESIGN**

When designing and building the latest FIT, Honda engineers restructured their approach. They conceived a compelling new proposition in the compact segment: an all-new city car that boasts outstanding everyday usability and readiness to meet the needs of modern consumers.

The updated design features, like the redesigned bumpers, give the car a more unified and distinctive look. With clean, sharp horizontal lines and added dynamic details, the car now exudes a fresh sporty vibe.



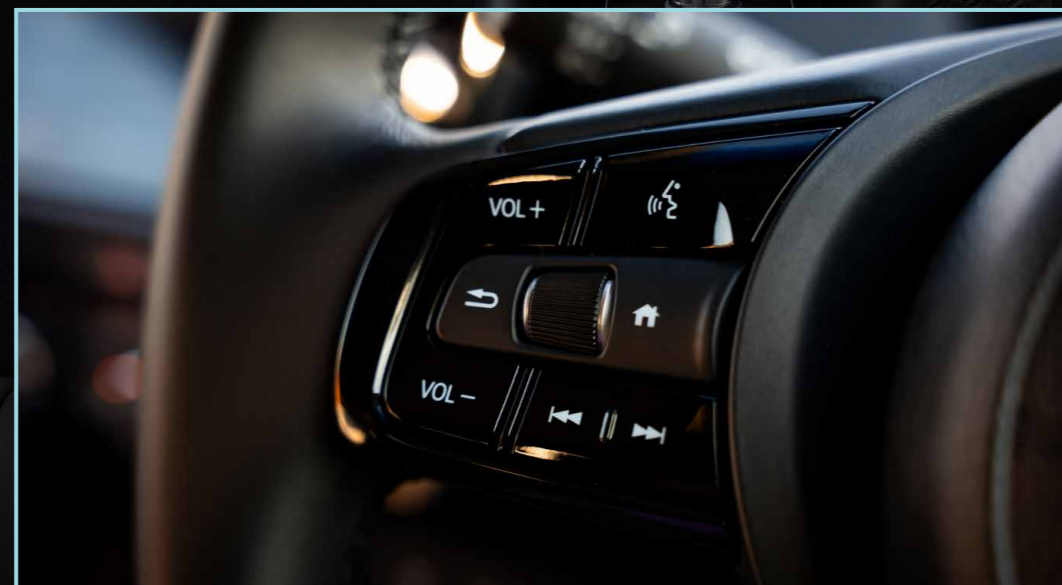


## ADVANCED, INTUITIVE INTERACTION

The car's interior designers paid great attention to detail when creating the uncluttered dashboard and interface. In response to consumer demand, Honda has reinstated physical controls for key functions, with tactile, precise-feeling dials for heating and ventilation settings.

Connectivity is key and the New Honda FIT provides a seamless experience that allows owners to link daily digital interactions with the highly intuitive 9" LCD touchscreen interface for minimised driving distraction. Easy access to convenient features, functions and controls are accessed with the help of the HMI (human-machine interface) system.

Driver assistance is displayed and accessible on the 7" TFT Digital Driver Display metre and smartphone controls enable smartphone mirroring via Apple CarPlay® and Android Auto™.







# ULTIMATE CONVENIENCE

Stowing more in your Honda FIT is not only possible but also convenient with a single-motion configuration of our exceptionally versatile Honda Magic Seats®. This way, you can utilise extra load space to take advantage of the car's height from floor to ceiling. This compact city car also features a lower tailgate edge, tailgate aperture and a flat cargo floor that can handle a variety of luggage or lifestyle-related equipment.

The functionality of the Honda Magic Seats® is boundless. With four simple configurations, you can pack just about anything into your New FIT:

### 01 Refresh Mode

Enjoy the view by removing the head restraints and folding back the seats.

### 02 Tall Mode

Fold up the rear seats to gain some extra storage height.

### 03 Long Mode

Fold down all the seats on the left- or right-hand side of the car and you will have plenty of room for those long items.

### 04 Utility Mode

Need to take your gear with you for an outdoor excursion? Just fold down the rear seats and you are good to go.



02 Tall mode



03 Long mode



04 Utility mode

\* For illustrative purposes only/ Models may vary according to specifications.

# A SELF-CHARGING HYBRID EXPERIENCE



Our new Honda hybrid technology is engineered to give you an exciting driving experience. It combines a 1.5-liter engine with a lithium-ion battery. The smart e:HEV self-charging hybrid system can switch between three modes: Electric, Hybrid, or Engine, depending on what's needed.

The total power has been boosted to 90kW (up from 80kW), and it offers 253 Nm of electric torque. This increase is achieved by enhancing the power of the traction motor by 10kW. We've also increased the engine power to 78kW (up from 72kW), making the driving smoother and more efficient.

## Driving Modes

Effortlessly switch between drive modes while benefiting from the convenience of a self-charging hybrid—eliminating the need for plugging in. Our advanced e:HEV hybrid system seamlessly transitions among three interchangeable drive modes:



### EV Drive

Delivers instant acceleration from standing, almost silent cruising and 100% electric drive.



### Hybrid Drive

Combines the petrol engine and the two electric motors for a highly efficient full hybrid performance.



### Engine Drive

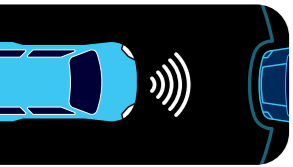
Uses the petrol engine to maintain higher speeds – and charges the battery while doing so.





# Honda SENSING

The Honda SENSING™ Active Safety Suite, standard across the Fit range, showcases world-class safety technologies, guaranteeing uncompromised driving security alongside exceptional driving efficiency.



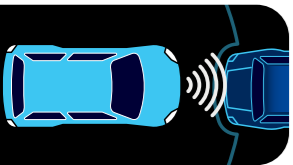
## FORWARD COLLISION WARNING

Above 16km/h, this system is designed to trigger alerts if it determines danger of a collision with a vehicle detected ahead



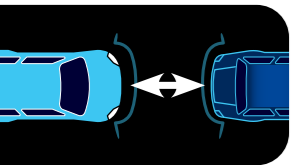
## LANE KEEPING ASSIST SYSTEM

Gentle steering corrections are applied when the vehicle drifts from the centre of a detected lane.



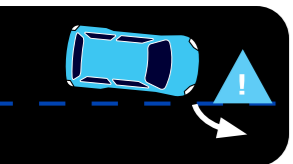
## COLLISION MITIGATION BRAKING SYSTEM

Brakes are automatically applied when there's a risk of colliding with a vehicle or person detected in front of you.



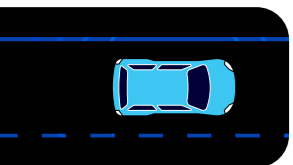
## ADAPTIVE CRUISE CONTROL

Assists the vehicle to follow the vehicle in front while maintaining the pre-set following distance and speed.



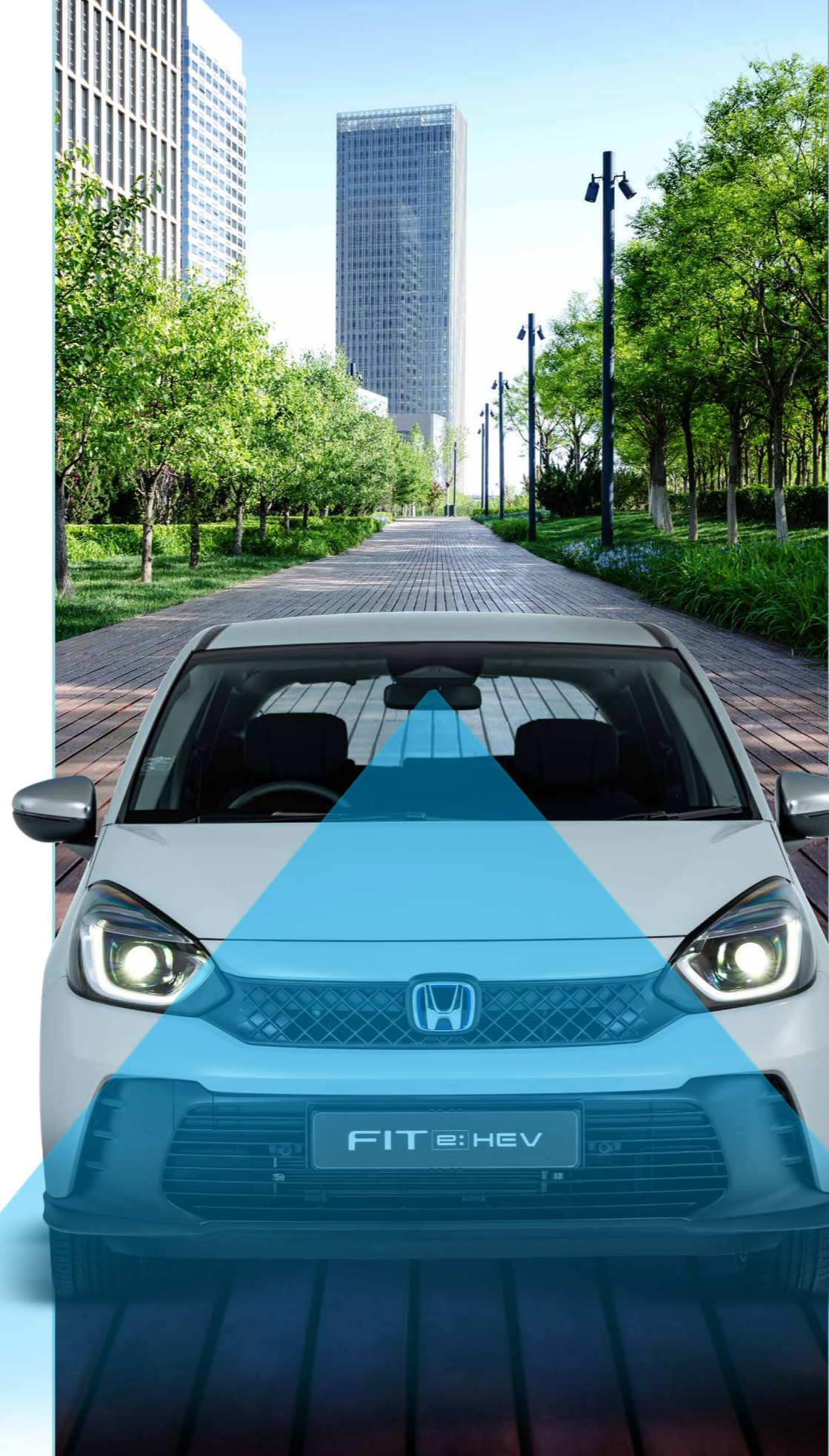
## LANE DEPARTURE WARNING

Warnings are provided when the system senses an unintended departure from a detected lane.



## ROAD DEPARTURE MITIGATION

Steering torque and brakes are automatically applied to assist in keeping the vehicle on the roadway.



Passive safety is as important to Honda as active safety to protect occupants in the event of an accident. FIT owners and occupants are protected by the following:



Anti-lock Braking System (ABS)



Rear Child Safety Locks



Advanced Compatibility Engineering (ACE) Body Structure



Hill Start Assist



Vehicle Stability Assist (VSA) with traction Control



Front, Side and Curtain SRS Airbags



# MODEL SHOWCASE

The New Fit is available in three models, the Comfort and Elegance models available exclusively in 1.5L Petrol CVT, as well as the flagship Hybrid model available with Honda's 1.5L e-CVT Hybrid system.

Experience a wide range of substantial features available on the Comfort, Elegance and Hybrid grades within the Honda FIT range that include:



## 1.5 COMFORT CVT

- Auto LED Headlights & Tail-lights
- Smart Keyless Entry with Start/Stop Button
- 9" HMI Infotainment System
- 7" TFT Multi-Information Display
- Automatic Air Conditioning
- Front & Rear Parking Sensors
- Honda SENSING™ Active Safety Suite



## 1.5 ELEGANCE CVT

- 16" Alloy Wheels
- Reverse Parking Camera
- Wireless Smartphone Charger
- Premium Fabric/Vinyl Upholstery
- Leather Steering Wheel & Gear Lever
- Interior Soft-Touch Trim



## 1.5 HYBRID e-CVT

- e:HEV Self-Charging Hybrid Powertrain
- Premium Eco-Friendly Leather Upholstery
- Heated Front Seats
- Exterior Chrome Detailing



# THE FETCHING FIT COLOUR RANGE

The colour line-up for the New FIT range includes a host of new colours including Opal White (Pearl), Crystal Red (Metallic), Meteoroid Grey (Metallic) and Rose Gold (Metallic), in addition to existing line-up colours which include Platinum White (Pearl) and Lunar silver (Metallic).

Platinum White Pearl



Crystal Red Metallic



Opal White Pearl



Rose Gold Metallic



Lunar Silver Metallic



Meteoroid Grey Metallic





# SPECIFICATIONS & FEATURES

	1.5 COMFORT CVT	1.5 ELEGANCE CVT	1.5 HYBRID e-CVT
<b>ENGINE</b>			
Type	Chain Driven DOHC i-VTEC	Chain Driven DOHC i-VTEC	Chain Driven DOHC i-VTEC
Displacement (cm³)	1498	1498	1498
Engine Maximum Power (kW @ r/min)	89 / 6600	89 / 6600	78 / 6,000 - 6,400
Engine Maximum Torque (Nm @ r/min)	145 / 4300	145 / 4300	127 / 4,500 - 5,000
Electric Motor Max Power (kW)	-	-	90
Electric Motor Max Torque (Nm)	-	-	253
Compression Ratio	10,6	10,6	13,5
Bore & Stroke (mm)	73 x 89,5	73 x 89,5	73 x 89,5
Fuel Consumption - Combined (l/100km)	5,5	5,5	3,7
CO2 Emmissions (g/km)	132	132	88
Fuel type	Unleaded Petrol	Unleaded Petrol	Unleaded Petrol
Idle Stop	-	-	EV Mode
Engine Start System	Start / Stop Button	Start / Stop Button	Start / Stop Button
<b>TRANSMISSION &amp; STEERING</b>			
Transmission Type	CVT	CVT	e-CVT
Drive Wheels	Front Wheel Drive	Front Wheel Drive	Front Wheel Drive
Steering - Type	Electric Power Steering	Electric Power Steering	Electric Power Steering
- Tilt/telescopic adjustment	•	•	•
- Turning radius (m)	5,0	5,0	5,0
<b>SUSPENSION &amp; BRAKES</b>			
Suspension Type - Front	McPherson Strut	McPherson Strut	McPherson Strut
- Rear	Torsion Beam	Torsion Beam	Torsion Beam
Electric Parking Brake (EPB)	•	•	•
Brakes Type - Front / Rear	Ventilated Disc / Disc	Ventilated Disc / Disc	Ventilated Disc / Disc
<b>WHEELS &amp; TYRES</b>			
Wheel Size - Front & Rear	15" X 6J	16" X 6J	16" X 6J
Tyre Size - Front & Rear	185/60R15	185/55R16	185/55R16
Spare Wheel - Wheel Size	T135 / 80 D15	T135 / 80 D15	Tyre repair Kit
Alloy Wheels	-	•	•
<b>DIMENSIONS &amp; CAPACITIES</b>			
Length x Width x Height Overall (mm)	4089 x 1694 x 1537	4089 x 1694 x 1537	4089 x 1694 x 1537
Wheelbase (mm)	2530	2530	2530

	1.5 COMFORT CVT	1.5 ELEGANCE CVT	1.5 HYBRID e-CVT
<b>DIMENSIONS &amp; CAPACITIES</b>			
Track / Tread (mm) - Front / Rear	1485 / 1475	1485 / 1475	1485 / 1475
Ground Clearance (mm)	134	134	141
Tare Mass (kg)	1104	1119	1209
Gross Vehicle Mass (GVM) (kg)	1550	1550	1680
Towing Mass (Braked) (kg)	800	800	300
Luggage space (l) - Rear Seat Up (VDA Method)	309	309	298
- Rear Seat Down - Load to Window	849	849	838
- Rear Seat Down - Load to Roof	1210	1210	1199
Fuel Tank Capacity (l)	40	40	40
Max. Seating Capacity (Persons)	5	5	5
<b>EXTERIOR</b>			
Door Handles	Body Coloured	Body Coloured	Body Coloured
Privacy Glass	•	•	•
Exterior Chrome Detailing	-	-	•
Side Mirrors - Colour	Body Coloured	Body Coloured	Silver
- Electric	•	•	•
- Power Tilt	•	•	•
- Side Indicators	•	•	•
Headlight Type (Auto H/L)	LED	LED	LED
Headlight Adjuster	Manual	Manual	Manual
LED Daytime Running Lights	•	•	•
Auto High Beam (AHB)	•	•	•
<b>COMFORT &amp; CONVENIENCE</b>			
<b>Seating &amp; Interior Styling</b>			
Seat Upholstery	Fabric	Fabric/Vinyl Combination	Eco-Friendly Leather
Steering Wheel & Gear Knob	Urethane	Leather	Leather
Seat Height Adjuster (Driver)	Manual	Manual	Manual
Honda Magic Seats	•	•	•
Armrests: Front / Rear	• / -	• / -	• / •
Rear Seat Split	60:40	60:40	60:40
Heated Seats (Front)	-	-	•
Leather Steering Wheel & Gear Knob	-	Leather	Leather



# SPECIFICATIONS & FEATURES

	1.5 COMFORT CVT	1.5 ELEGANCE CVT	1.5 HYBRID e-CVT
<b>COMFORT &amp; CONVENIENCE</b>			
<b>Seating &amp; Interior Styling</b>			
Interior Trim - Dashboard	-	Soft Touch	Soft Touch
Door Panel	-	Soft Touch	Soft Touch
<b>Infotainment</b>			
Infotainment System	9" Display Audio	9" Display Audio	9" Display Audio
Bluetooth (Hands Free Telephone)	•	•	•
Apple CarPlay® & Android Auto™ Compatibility	•	•	•
USB Connectivity (Front)	x 2	x 2	x 2
USB Charger (Rear) Type-C	x 2	x 2	x 2
Speakers - Front & Rear	x 4	x 4	x 4
Wireless Charger	-	•	•
<b>Instruments &amp; Controls</b>			
Air Conditioning	Automatic	Automatic	Automatic
Rear View Mirror	Standard Day / Night	Standard Day / Night	Standard Day / Night
Vanity Mirror (Driver & Passenger)	•	•	•
ECON Mode Button	•	•	•
Cruise Control	•	•	•
7" TFT Multi-Information Display	•	•	•
Electric Windows- Front & Rear	•	•	•
Electric Windows- Auto Up/Down	Driver Only	Driver Only	Driver Only
<b>SAFETY</b>			
<b>Active Safety</b>			
Vehicle Stability Assist (VSA)	•	•	•
Anti-lock Braking System (ABS)	•	•	•
Electronic Brake-Force Distribution (EBD)	•	•	•
Hill Start Assist (HSA)	•	•	•
Brake Hold	•	•	•
High-mounted Brake Light	•	•	•
Rear View Camera	-	•	•
Parking Sensors	Front & Rear	Front & Rear	Front & Rear
<b>Passive Safety</b>			
SRS Airbags - Front, Side & Curtain	•	•	•

	1.5 COMFORT CVT	1.5 ELEGANCE CVT	1.5 HYBRID e-CVT
<b>SAFETY</b>			
<b>Passive Safety</b>			
Seatbelt Pretensioning System - Front	•	•	•
3-Point ELR Seat Belts	•	•	•
Headlight, Parking Brake & Key Reminder	•	•	•
Seatbelt Warning Reminder	Front & Rear	Front & Rear	Front & Rear
ISOFIX Child Seat Anchors - Rear	•	•	•
<b>Advanced Safety (HONDA SENSING)</b>			
Adaptive Cruise Control	•	•	•
Collision Mitigation Braking System	•	•	•
Lane Keep Assist System	•	•	•
Road Departure Mitigation	•	•	•
<b>SECURITY</b>			
Alarm System	•	•	•
ECU Immobiliser	•	•	•
Power Door Locking Switch	•	•	•
Auto Door Locking	•	•	•
Walk-Away Auto Locking	•	•	•
Remote Keyless Entry	Smart Entry	Smart Entry	Smart Entry
<b>AFTER SALES</b>			
Warranty	5 Year / 200,000 km	5 Year / 200,000 km	5 Year / 200,000 km
Hybrid Warranty	-	-	8 Year / 200,000 km*
Service Plan	4 Year / 60,000 km	4 Year / 60,000 km	4 Year / 60,000 km
Service Intervals	15,000 km	15,000 km	15,000 km
AA Roadside Assist	3 Years	3 Years	3 Years

\* Extended warranty of 8-year / 200,000km is only applicable to the Lithium-ion battery and other related components of the Hybrid system.



# HONDA

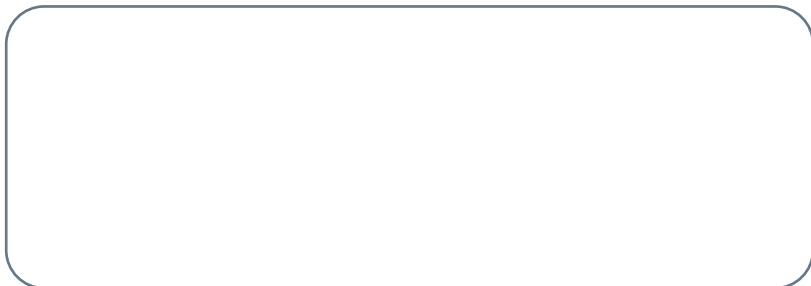
The Power of Dreams



**Scan me for more information**

Indicated CO<sub>2</sub> and fuel consumption figures quoted are obtained when testing the vehicle in line with the compulsory requirements of SANS 20083 and therefore may not necessarily be achieved under day-to-day driving conditions. Actual fuel consumption figures may be influenced by a range of factors, including but not limited to vehicle maintenance, driving style and behaviour. Fuel consumption may be further affected by the environmental factors and conditions under which the vehicle is operated including altitude, road condition and traffic flow. The figures used in this guide should therefore be treated as indicative only.

Honda Motor Southern Africa (Pty) Ltd. reserves the right to change and modify equipment or specifications at any time without prior notice. The models illustrated in this brochure may show specifications for various markets and not specifically for Southern Africa. They may include optional equipment and accessories not fitted as standard. Subject to error. For precise information, please contact your Honda Dealership. © Honda Motor Southern Africa (Pty) Ltd. Not to be reproduced wholly or in part without written permission from Honda Motor Southern Africa (Pty) Ltd. Warranty and Service details may differ outside of South Africa.



[www.honda.co.za](http://www.honda.co.za)

April 2024